



**Agriturismo
Tenuta di Mensanello**

AVIOSUPERFICIE

In order to comply with the new regulation issued by the Italian “Ministero dei trasporti – ENAC” D.M. 8/03 artt. 3.3 and 5, prior to use the airfield it is mandatory to fill in, download and fax this form and wait for our positive response. This form will be collected and kept for five years at disposal of the Civil Aviation Authority ad Security Police.

REQUEST TO LAND

AIRCRAFT REGISTRATION		TYPE OF AIRCRAFT	
DATE OF ARRIVAL		ETA local time	
DEPART. AERODROME		NEXT DESTINATION	
DAYS OF STAY		PARKING TIE DOWN	

PERSONS ON BOARD: PILOT IN COMMAND

COPILOT

SURNAME/ NAME		SURNAME/ NAME	
TYPE / NUMBER OF LICENCE		TYPE / NUMBER OF LICENCE	
TOTAL HOURS OF FLIGHT		TOTAL HOURS OF FLIGHT	
MOBILE PHONE NUMBER		MOBILE PHONE NUMBER	
PASSENGERS NUMBER			

The pilot is aware of dimensions of the runways, published circuits, position and height of obstacles. He is the only responsible for safe flight operations and calculation of proper distances for take off – landing runs, according to aircraft manual. A briefing with the airfield personnel is mandatory prior of arrival. Please call at 0039-335-7068430 Airfield Manager

Date of request

The pilot in command
(signature)

According to the Privacy law in force (675/96), the Tenuta di Mensanello assure that all the data you communicate will be used only for the above mentioned purpose.

Clearance for CTR (D) Grosseto:

GROSSETO APPROACH 124.52 (it, en)

Elev 605' / 184 m

N43 22.2
E011 07.5

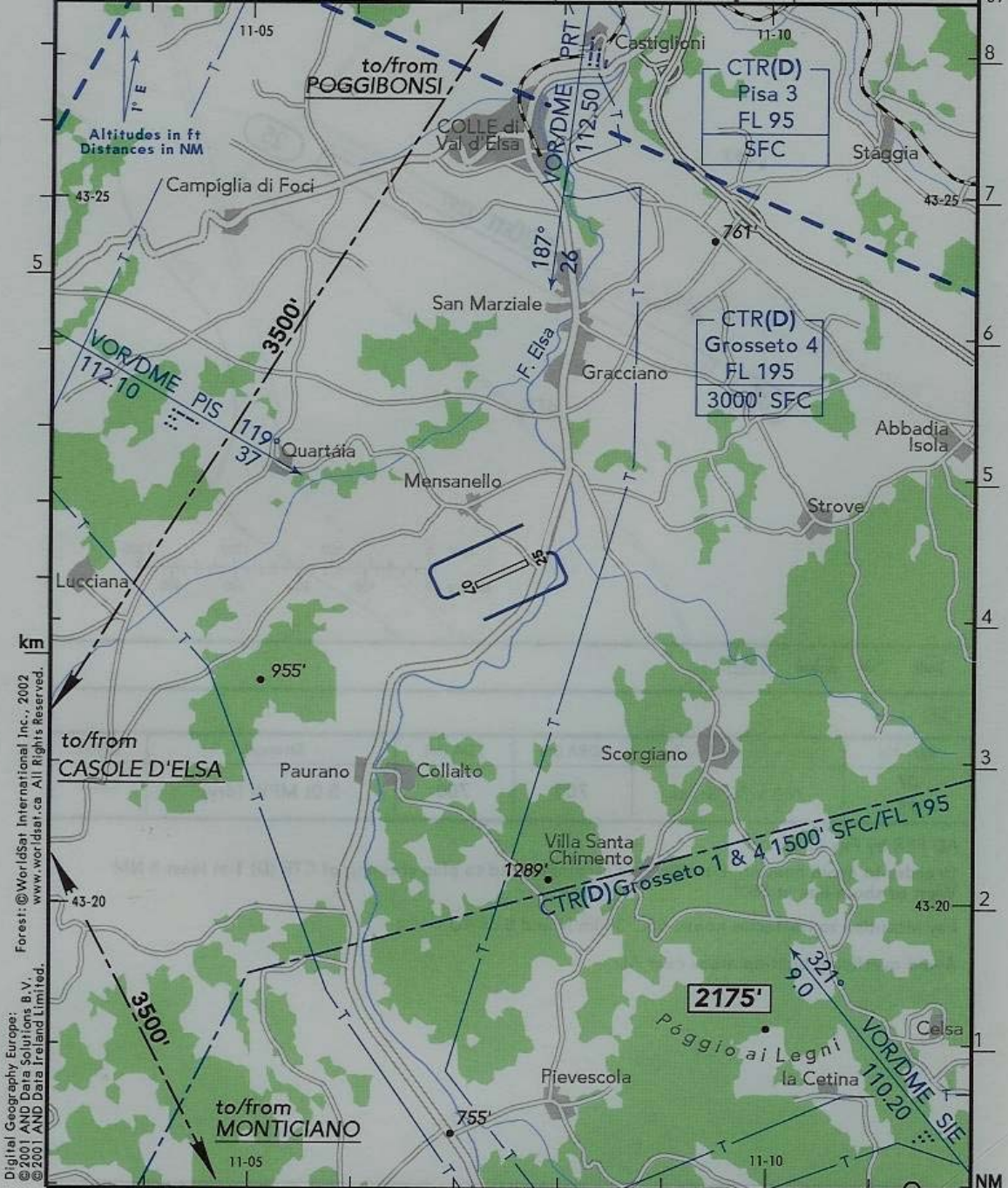
3.4 NM S Colle di Val d'Elsa

(Air/Air) Blind transmission

MENSANELLO 130.00 (it, en)

RWY	ILS	RWY	ILS

SCALE 1:100 000



km
 Digital Geography Europe:
 © 2001 AND Data Solutions B.V.
 © 2001 AND Data Ireland Limited.
 Foresi: © WorldSat International Inc., 2002
 www.worldsat.ca. All Rights Reserved.

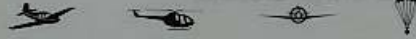
CHANGES: 1st Edition.

© JEPPESEN SANDERSON, INC., 2005. ALL RIGHTS RESERVED.
BOTTLANG AIRFIELD MANUAL®

MENSANELLO
MENSANELLO
ITALY

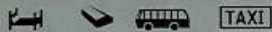
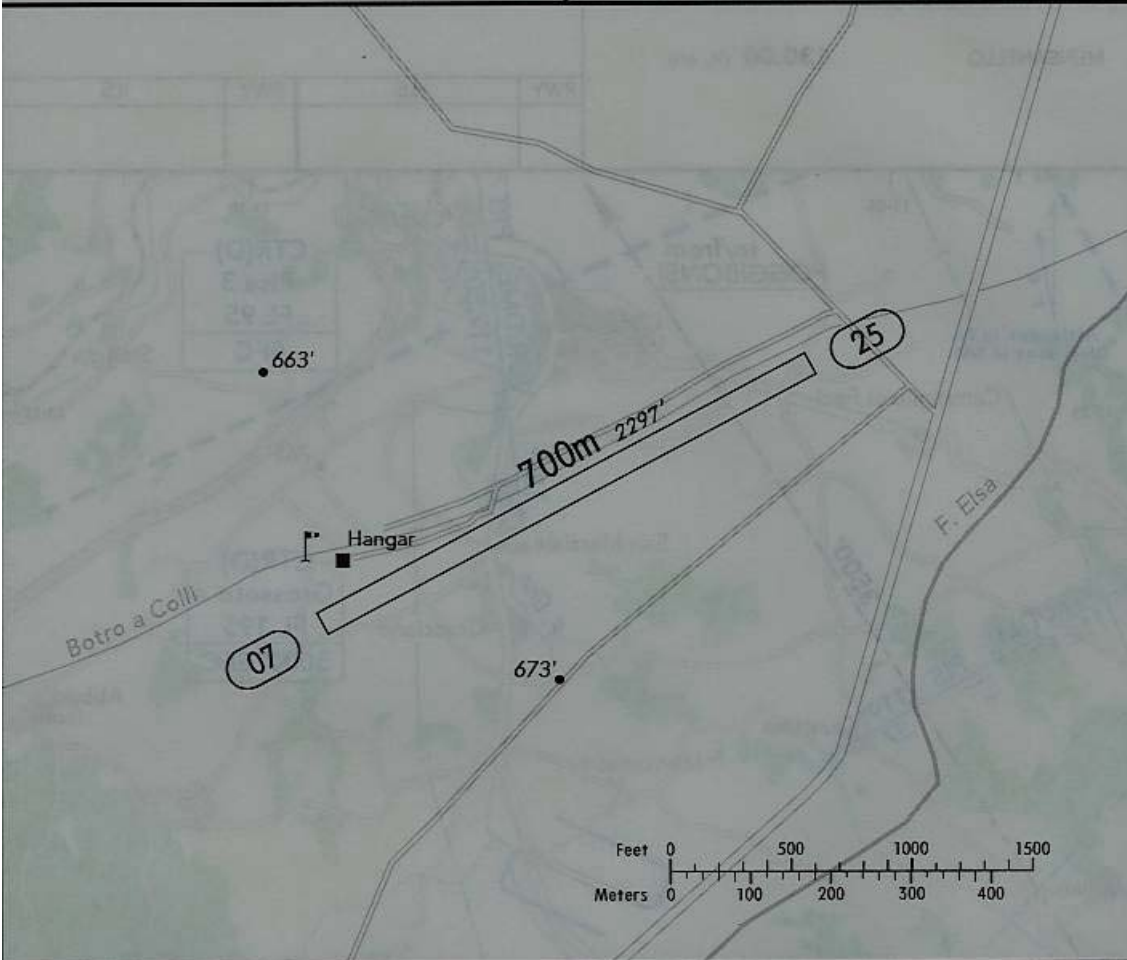
19-2 1 APR 05

JEPPESEN



(FIS)

ROMA INFORMATION **125.75**



RWY No	Dimension (m) - Surface	TORA (m)	LDA (m)	Strength	Lights
07	700 x 30 Grass	700	700	5.0t MPW (dry)	---
25					

AD PPR by Fax or Tel.

In order to avoid heavy MIL traffic, it is recommended to plan crossing of CTR (D) 1 at least 3 NM West of shore-line at 500'.

Pay attention to obstacles hoose 650' 300m N and S of AD.

Avoid overflying built-up areas near AD.